

# DECLINING TRENDS IN MINORS' GAMBLING IN FINLAND

Susanna Raisamo

12th SNSUS Conference  
Tampere, Finland



NATIONAL INSTITUTE FOR HEALTH AND WELFARE

# BEFORE WE MOVE ON...

A few facts about Finnish gambling landscape

Legal gambling age 18 years

High visibility & accessibility

High gambling expenditure

Positive public attitudes

Gambling policy based on monopoly

# ABOUT MINORS' GAMBLING

**20 – 37 %**

report having gambled in  
the past 12 month

**5 – 9 %**

are weekly gamblers

**1 %**

Problem gambling  
prevalence (SOGS  $\geq 3$ )

**7 %** of underage

gamblers report having  
experienced at least  
one harm due to  
gambling



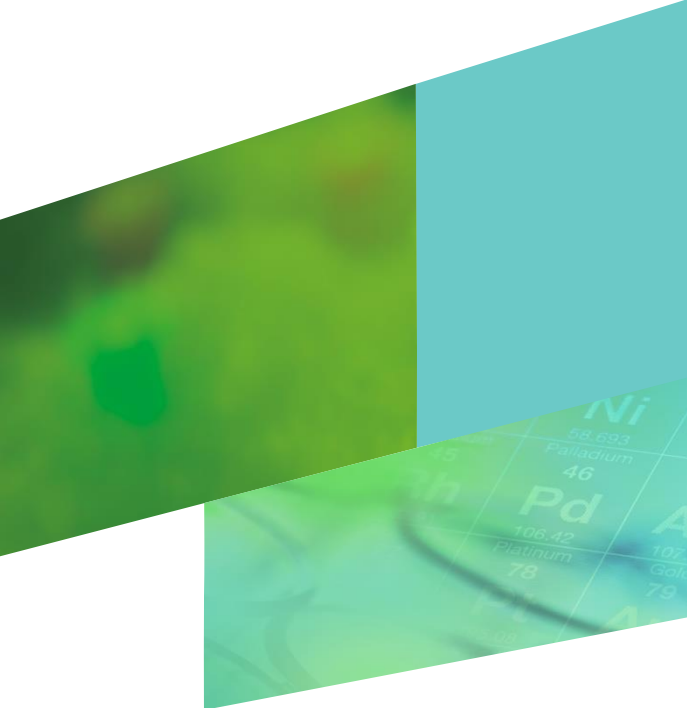
**4 %**

of minors report  
having gambled  
on the Internet

**EGMs**

the most popular form of  
gambling

*Figures based on data sources described on the next slide*



# DECLINING TRENDS IN MINORS' GAMBLING

Overview of trends based on four national data sources

# DATA SOURCES

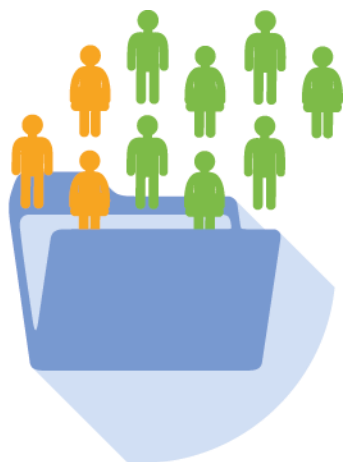
Adolescent gambling is regularly monitored across national surveys

Adolescent Health and Lifestyle Survey

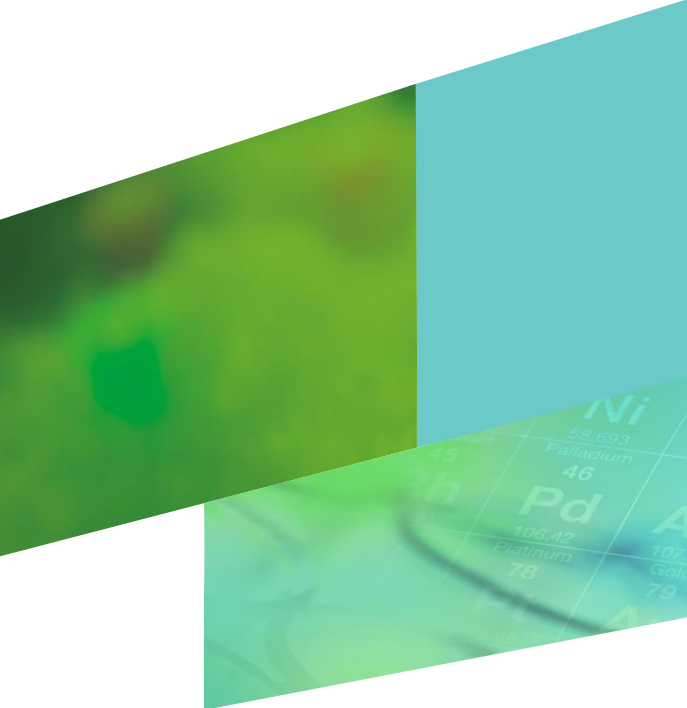
Finnish Gambling Survey

School Health Promotion Study

ESPAD\*

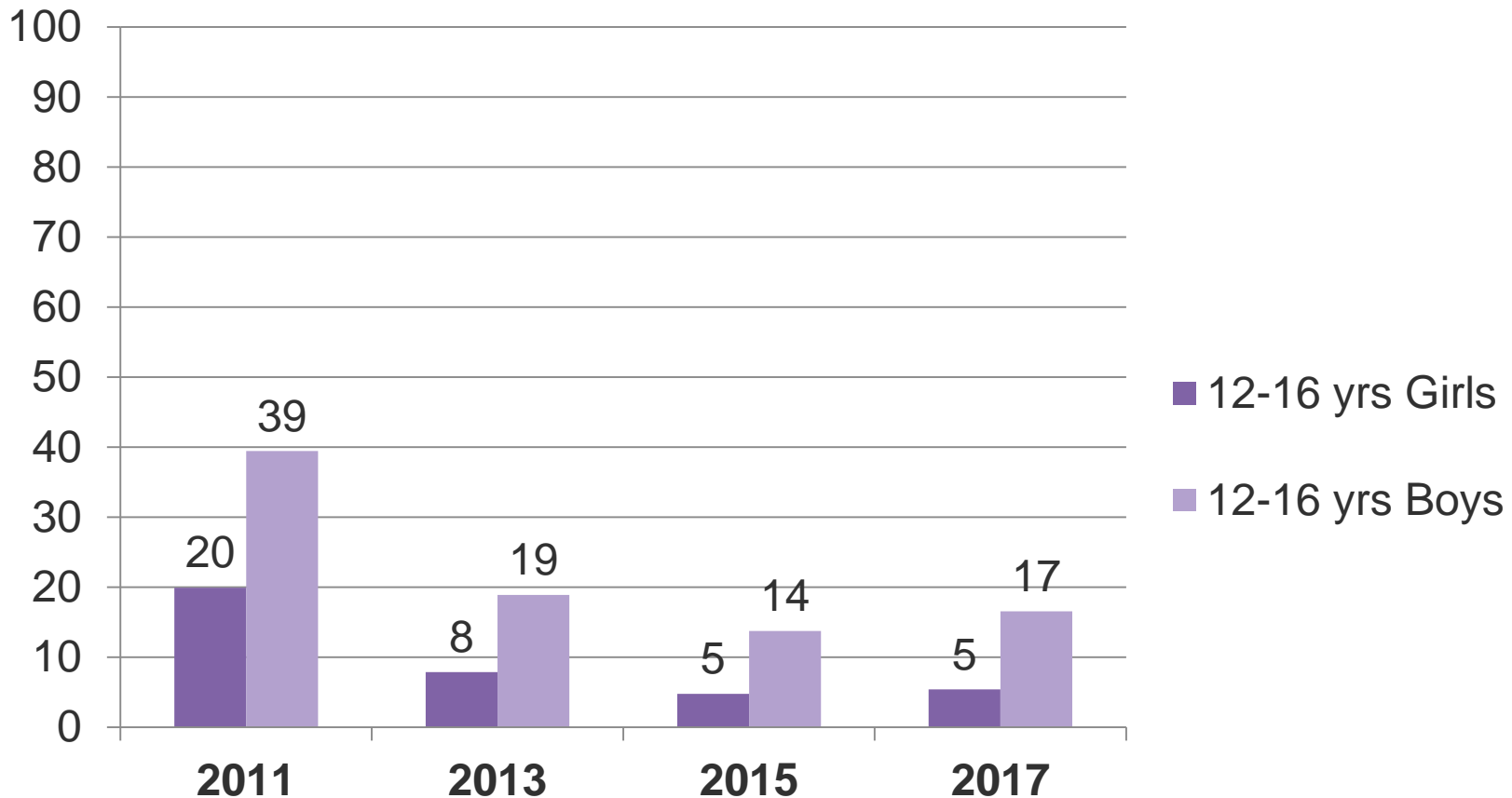


\* European School Survey Project on Alcohol and Drugs



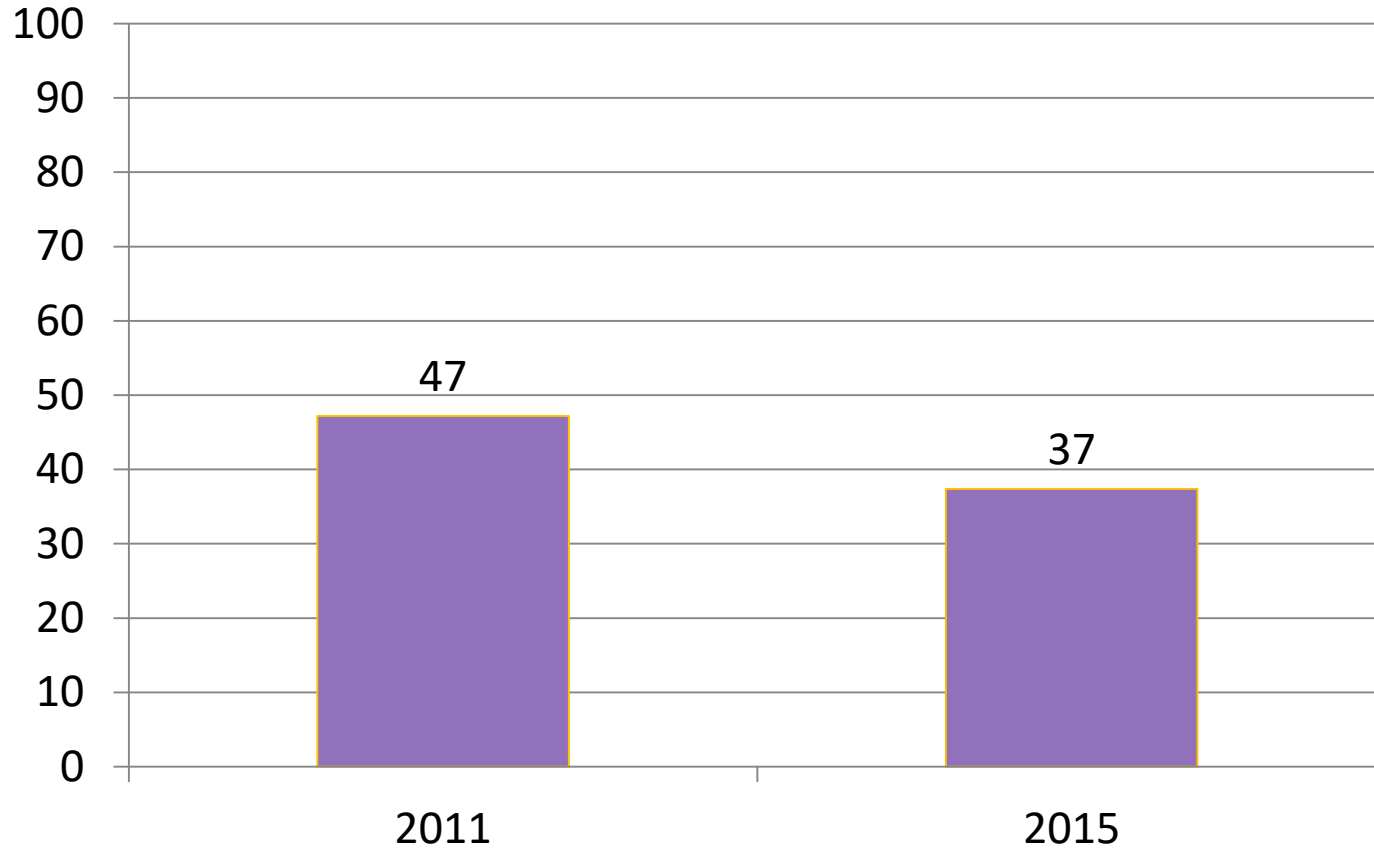
# EXAMPLES OF THE FINDINGS

# 6-MONTH GAMBLING (%) 2011 – 2017 AMONG 12-16 YRS



*Data source: The Adolescent Health and Lifestyle Surveys, 2011 - 2017*

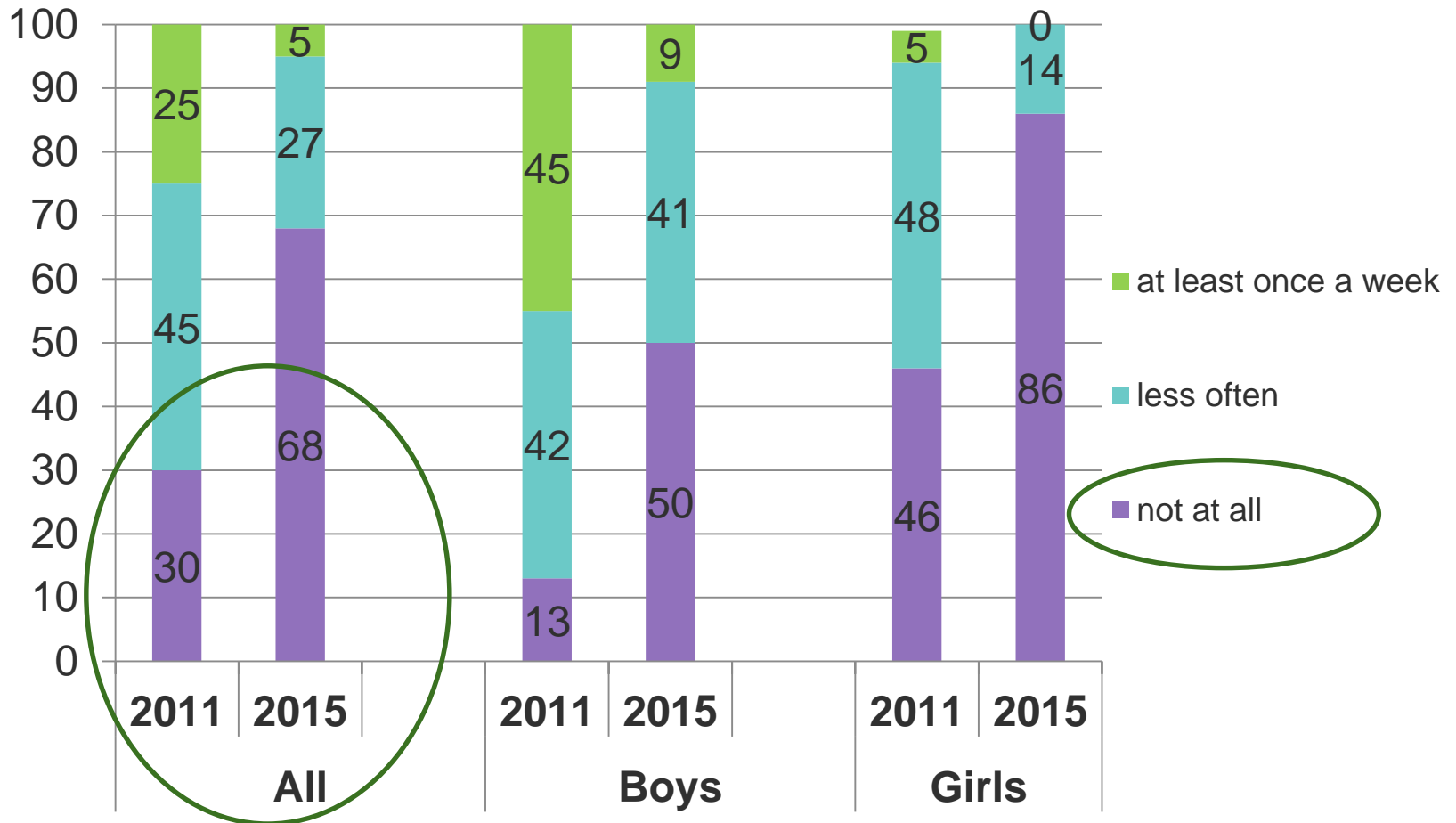
# 12-MONTH GAMBLING (%) 2011 & 2015 AMONG 15-17 YRS



*Data source: Finnish Gambling Surveys 2011 & 2015*

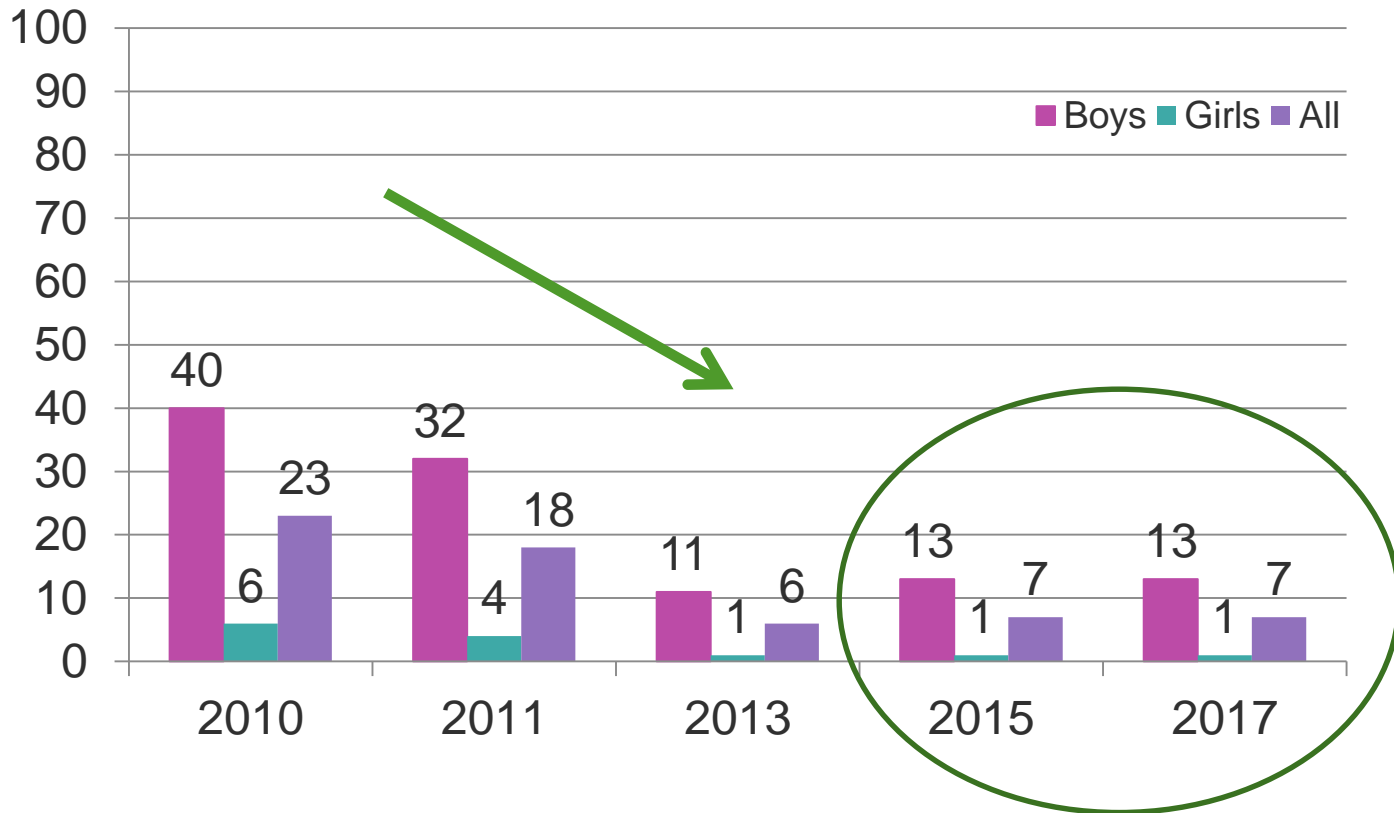


# EGM GAMBLING (%) 2011 & 2015 AMONG 16 YRS



Data source: ESPAD surveys from 2011 and 2015

# GAMBLING WEEKLY (%) 2010 - 2017 AMONG 15-16 YRS



*Data source: School Health Promotion Studies, 2010 - 2017*

# PUTTING IT ALL TOGETHER

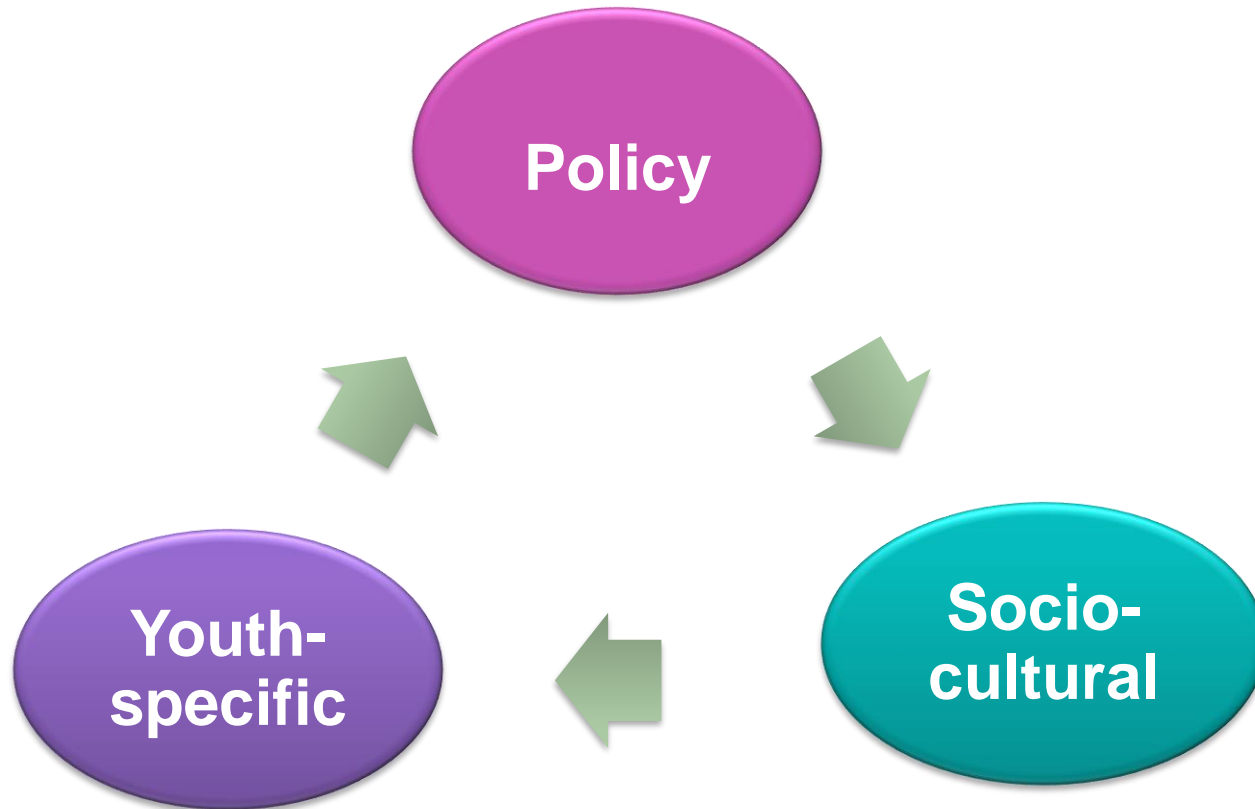
Findings from four national data sources reviewed here corroborate each other showing **a consistent and significant decline in minors' gambling over the recent years in Finland.**



## **BUT**

Monitoring gambling trends is of little value without understanding potential contributing factors.

# THREE CONTRIBUTING FACTORS





## Policy

### **National gambling policy regulation**

- Raising the legal gambling age from 15 to 18 years in 2010/2011 contributed to the overall downward trend in gambling; even if the general availability of gambling products was not reduced.



## Youth-specific

### **Youth-specific explanations**

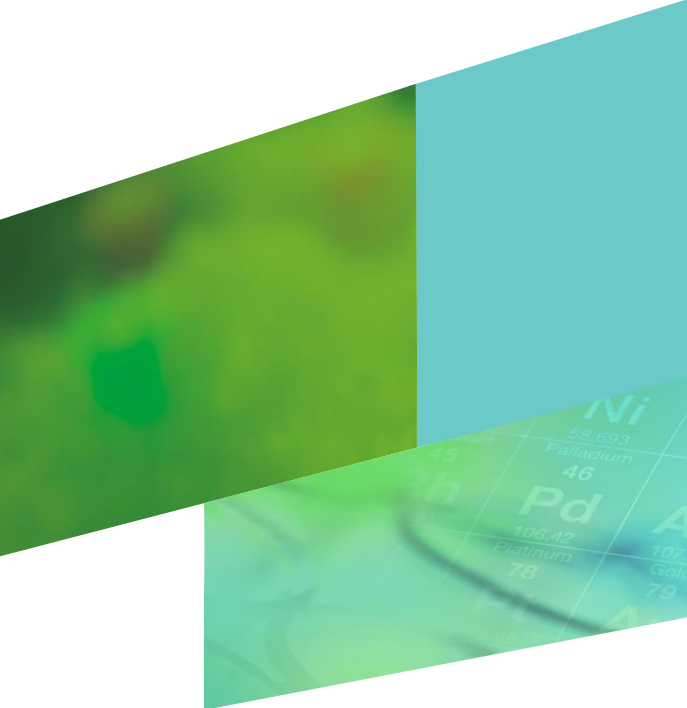
- Growing tendency to adopt other type of leisure activities than gambling?
- Reflect positive trends reported also in tobacco use and alcohol drinking
- Decline in gambling does not seem to be limited to Finland (similar findings are reported i.e. from Sweden and Great Britain)



## Socio-cultural

### **Socio-cultural values and norms**

- Population is becoming more aware of harm caused by gambling?
- Norm-breaking behaviours have also been decreasing in adolescents



# THANK YOU!

susanna.raisamo@thl.fi

 @SusannaRaisamo